

WATER'S EDGE



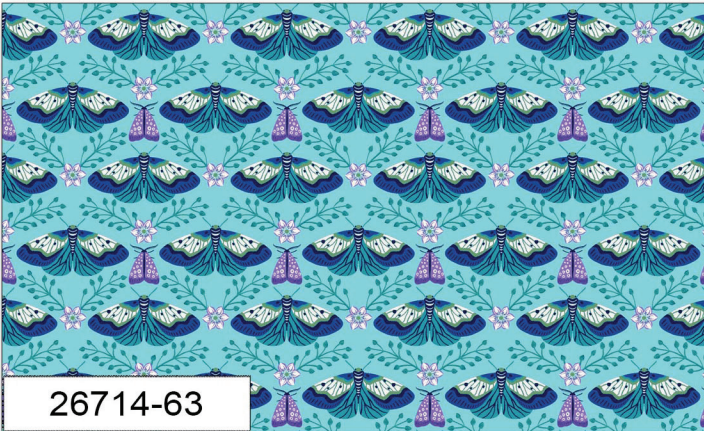
by Natural Born Quilter Brett Lewis

SELVAGE

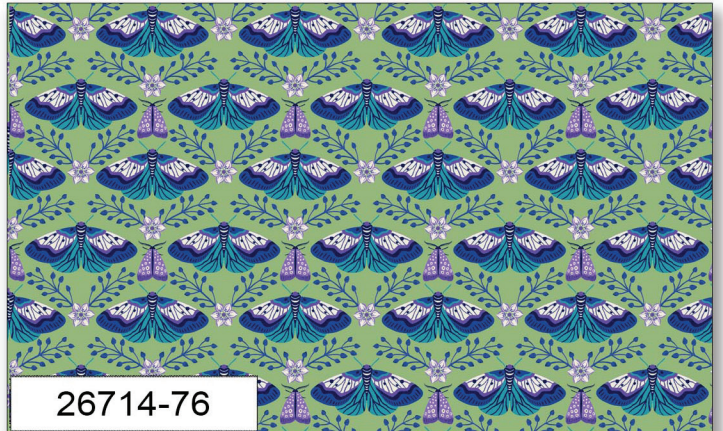


26710-49

SELVAGE

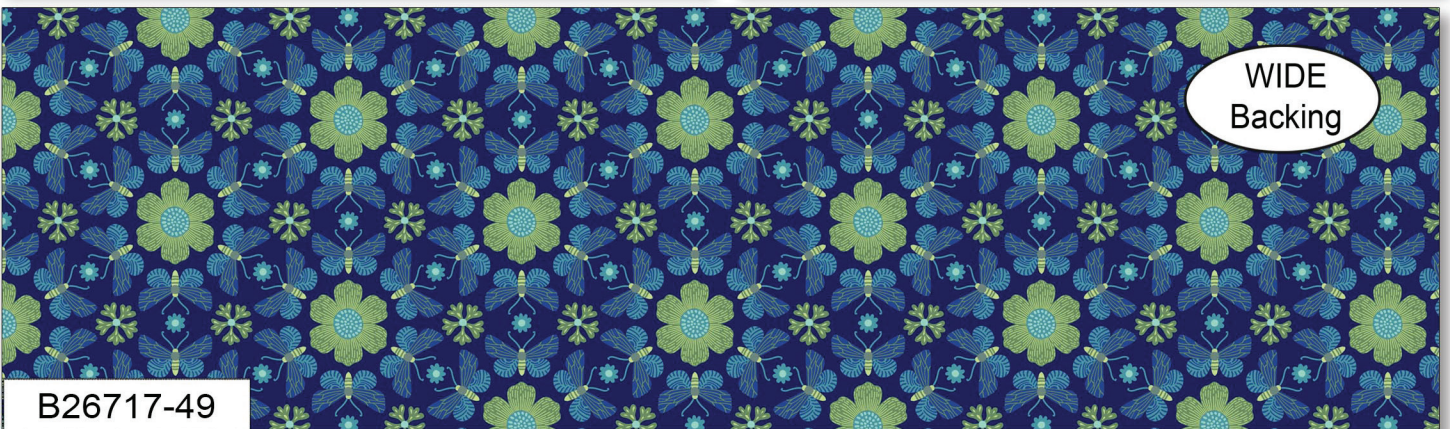


26714-63



26714-76

SELVAGE



B26717-49

WIDE
Backing

WATER'S EDGE

by Natural Born Quilter Brett Lewis

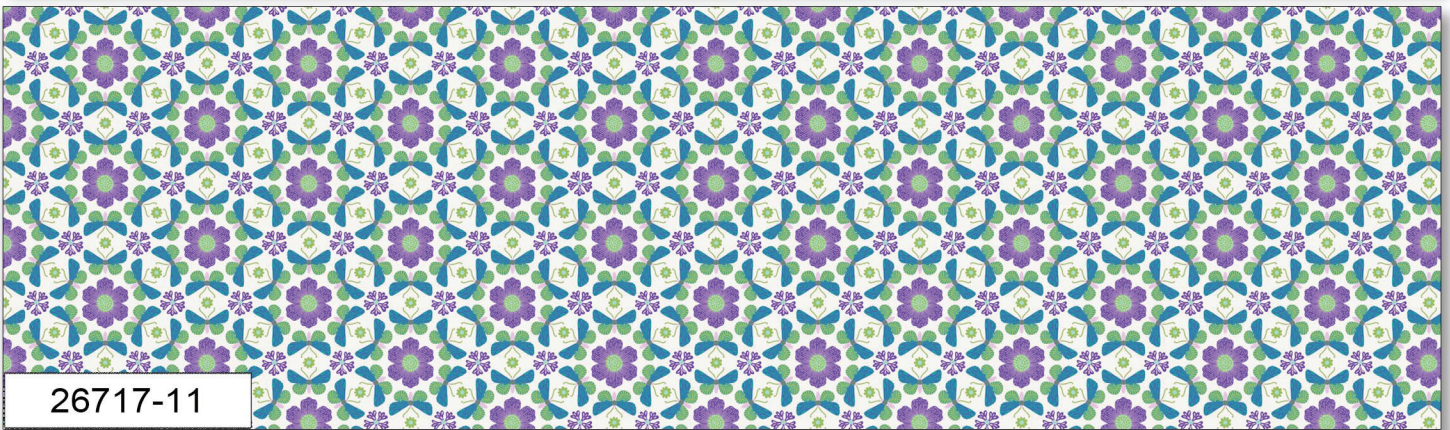


SELVAGE



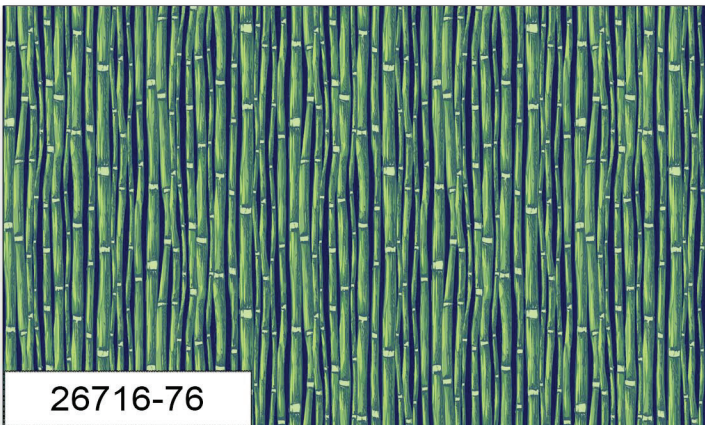
26710-86

SELVAGE



26717-11

SELVAGE



26716-76



26712-49

WATER'S EDGE



by Natural Born Quilter Brett Lewis

SELVAGE

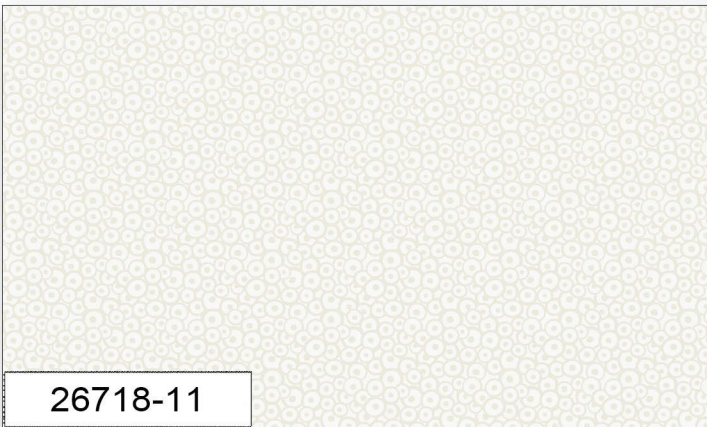


26711-86

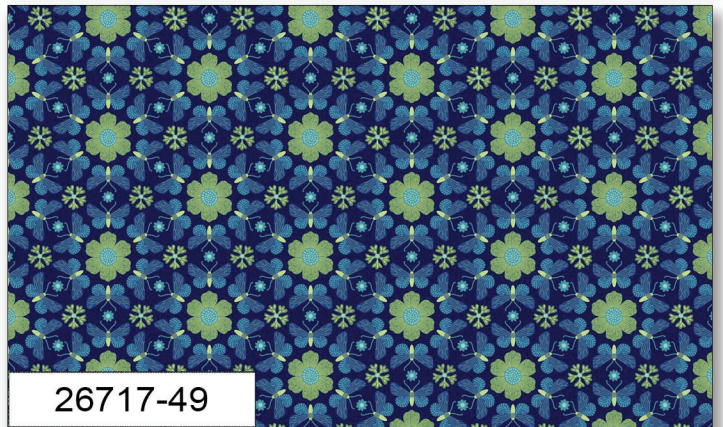


26711-49

SELVAGE



26718-11

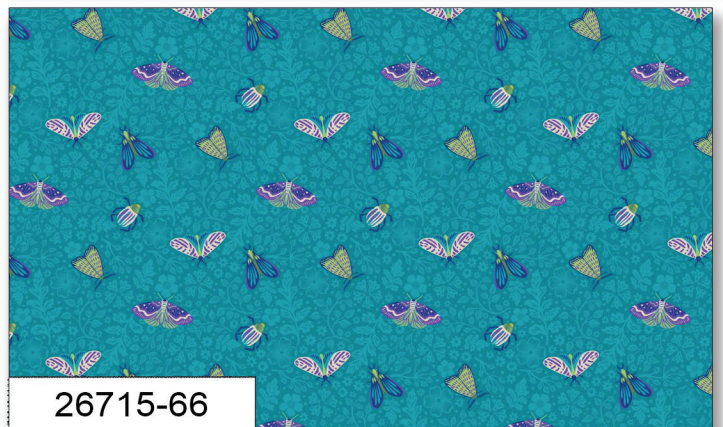


26717-49

SELVAGE



26713-11



26715-66

WATER'S EDGE



by Natural Born Quilter Brett Lewis

Explore the Canadian wetlands in the Natural Born Quilter's forth collection for Northcott Fabrics. Brett continues to celebrate his love for nature in Water's Edge. Showcased in the collection are beautifully illustrated flora and fauna featuring Great Blue Heron, frogs, turtles, dragonflies, moths, and mayflies as well as a variety of foliage created in Brett's unique style. Vibrant shades of navy, teal, turquoise, green, and magenta characterize the collection. A selection of premium Colorworks solids completes the coordination. Take a stroll along the Water's Edge and discover the beauty of nature with the Natural Born Quilter.

